

Alpha Chi Rho

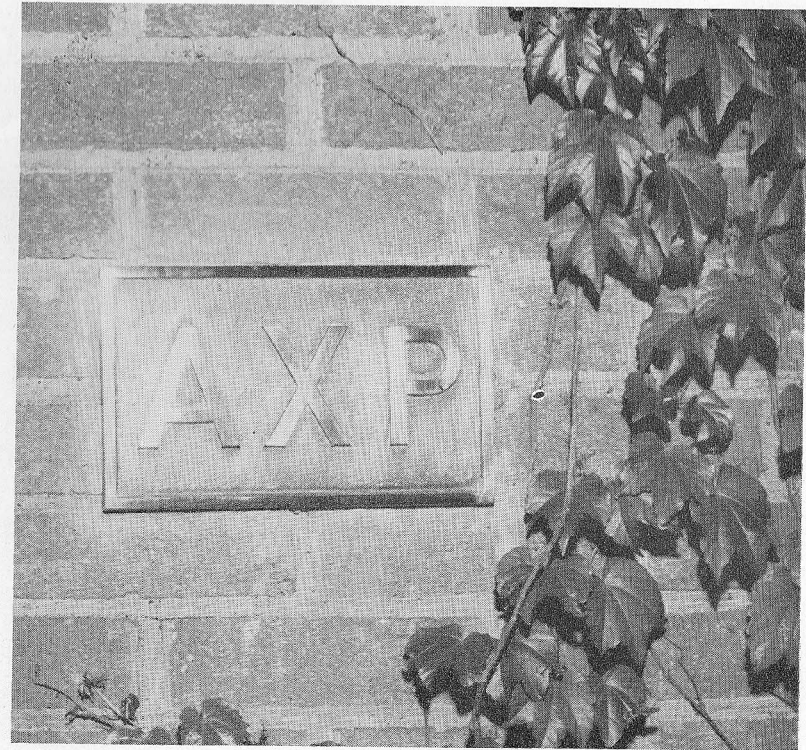
THE AIM OF Alpha Chi Rho is to secure a membership of the highest standard, thoroughly homogenous in quality, and permanent in its allegiance and effort for the Fraternity, not merely during college days, but throughout life.

No man is pledged to Alpha Chi Rho unless he sincerely wants to become a member and the Brothers believe he will help fulfill the aim of the Fraternity.

The aim of the Fraternity can best be understood through our Landmarks or ideals. Briefly, they are:

- 1) Recognition of Christ as a moral exemplar.
- 2) The insistence on a high and clean moral standard.
- 3) The paramount duty of brotherly love between the members.
- 4) Judgment not by externals, but by intrinsic worth.

In recognizing our Christian heritage we seek to follow Christian ideals. Thus, the Fraternity holds all of its members to this basic principle: Act always in such a way that one's private practice could be accepted as universal practice with well-being to society. At the same time, a Brother's basic duty is one of personal loyalty to every other Brother,



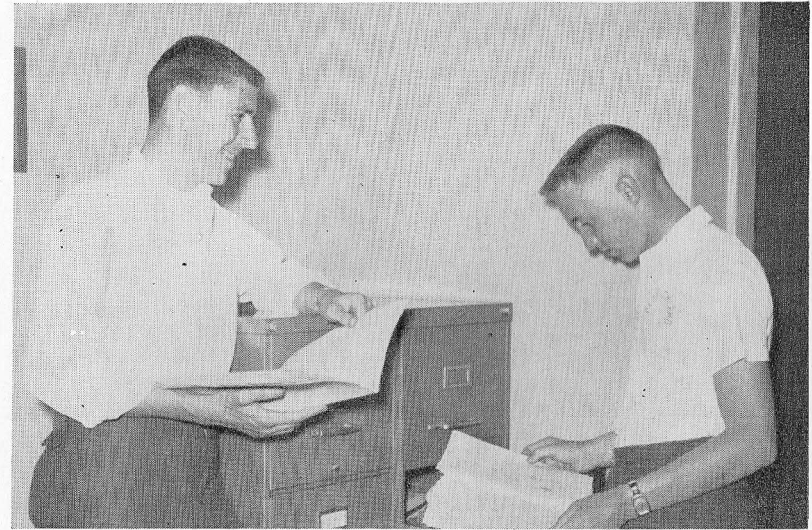
to the Fraternity as a whole, to its teachings and government, to its Chapters and officers. We also insist that members be selected by their intrinsic worth and character, not by social position, physical appearance or other external qualifications.

These are our ideals. They are best expressed in our motto "Be Men," which inspired the origin of our Fraternity in 1895 and its subsequent institution on the Illinois campus in 1916.

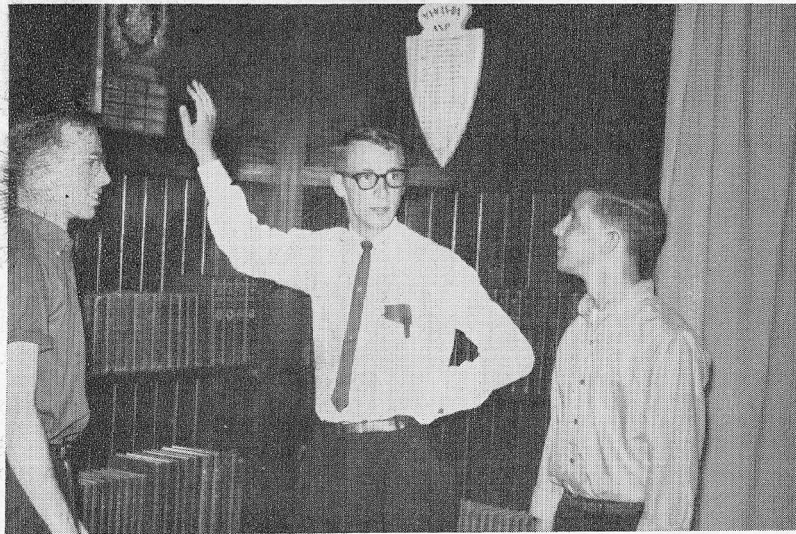
Scholarship—Your First Obligation . . .

SCHOLARSHIP is Alpha Chi Rho's primary consideration. We constantly strive to maintain our ideal study conditions. At Alpha Chi Rho each man has a metal desk of his own, which provides ample room for books and study. Quiet hours are maintained both during the day and during the night on weekdays and on Sundays. The breaking of quiet hours represents the most inexcusable infraction of house rules.

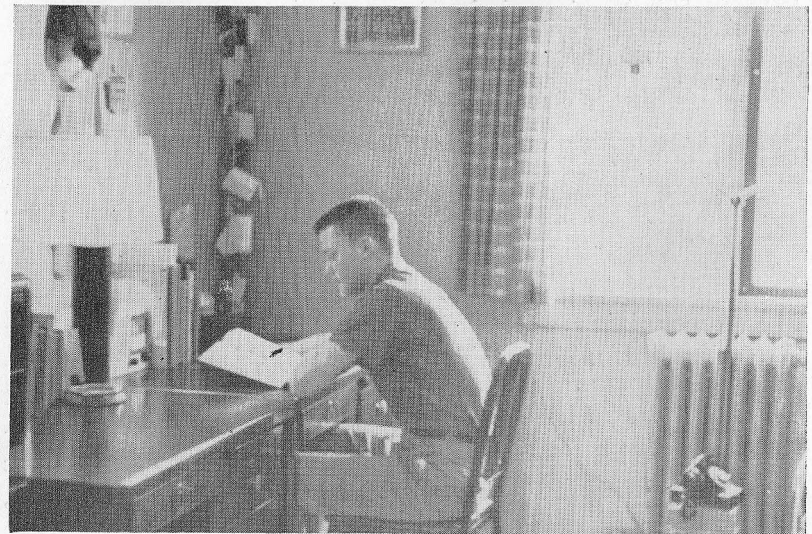
Freshman scholarship receives special attention. The senior roommates compose the scholarship committee which discusses at regular meetings the various study problems of pledges and Brothers. Each senior roommate sets study rules for the pledge in his room, after considering his abilities and study habits. The scholarship committee keeps a close check on each freshman pledge's progress and gives all possible assistance when necessary.



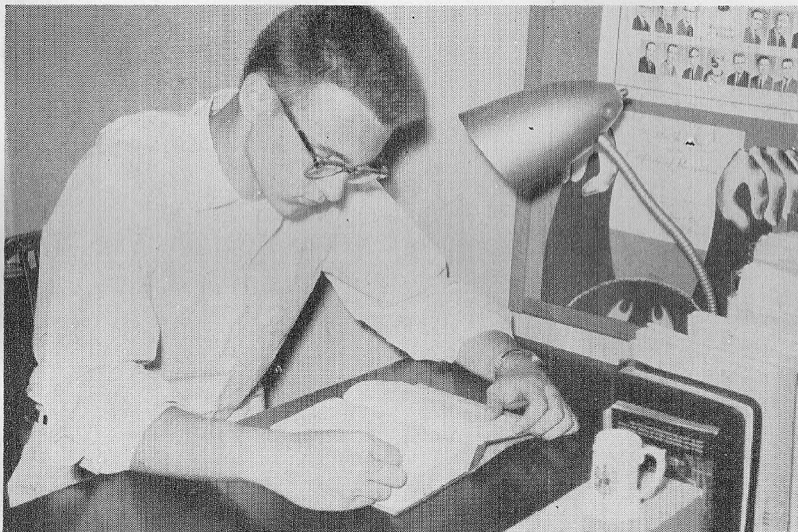
JOHN LAING, SCHOLARSHIP CHAIRMAN, helps a new pledge use our file on past exams, a terrific aid to the new man.



OUR "B" AVERAGE FRESHMEN compete for the Freshman Scholarship Plaque.

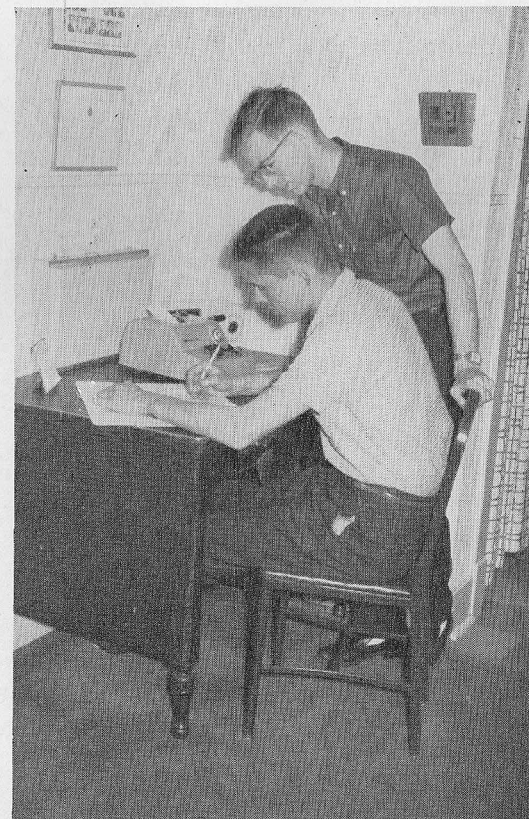


OUR STUDY ROOMS are among the finest on campus. Every man at Alpha Chi Rho has his own modern metal desk.



CHET LASKOWSKI, most recent man to make Phi Eta Sigma, Freshman Scholarship Honorary.

Alpha Chi Rho has a National Scholarship Officer who directs scholarship betterment in all our chapters. Each year our midwestern Chapters get together for a weekend Scholarship Conclave. The national officer is present and we discuss scholarship problems presented by the different Chapters.



HELP IS ALWAYS AVAILABLE for the new men from both upper-classmen and our files.



DEAN SLOCA conducts one of the discussion groups at our Midwest Scholarship Conclave.



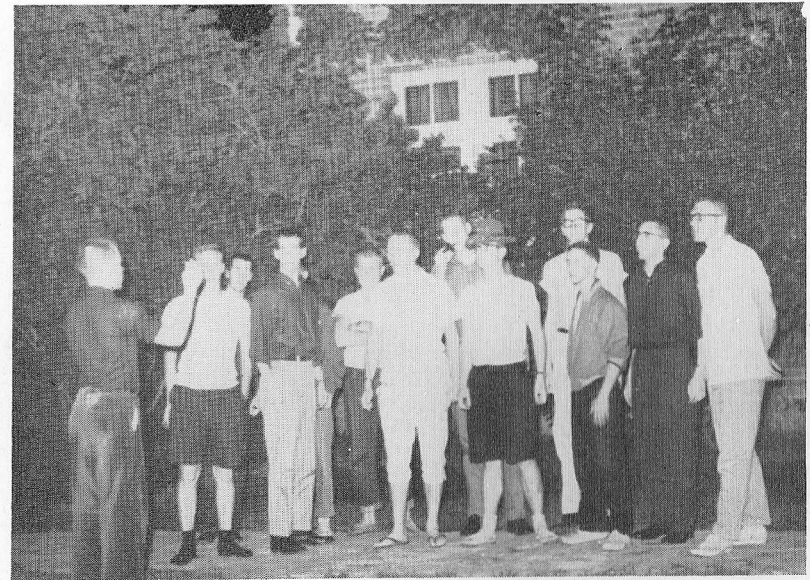
Our Nightly Seminar for Most Efficient Studying

AXP Social Life . . .

Alpha Chi Rho encourages an active social life, for this is an important part in developing a full personality while in college.

The social calendar begins in the fall with our annual pledge dance and is followed by our Winter Formal. Weekend activities include Dad's Day, football games, Homecoming and Stunt Show. We and our partners, Delta Zeta, look for great success in Stunt Show this year.

During the spring we have our annual picnic with our Purdue chapter. Our costume dance, The Caveman Drag, and Spring Formal take place. We also spend time practicing for SACHEM Sing in which we are strong competitors.



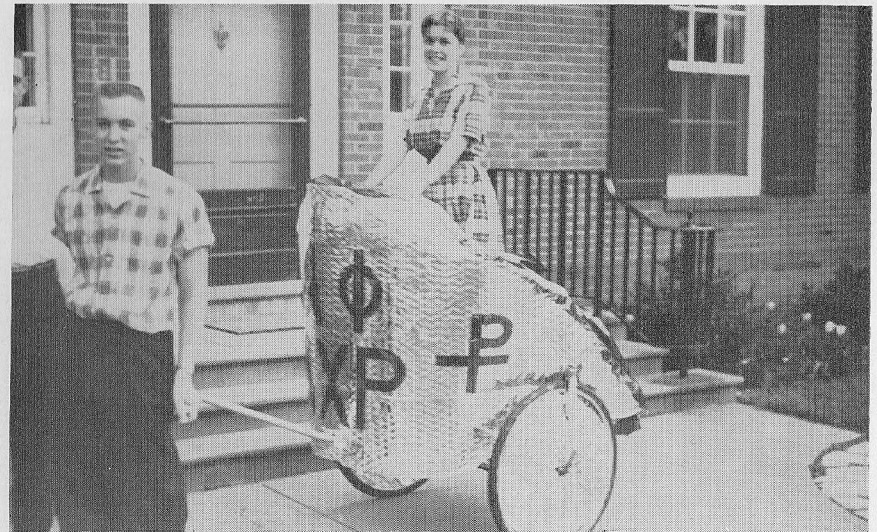
We Join in Song to Serenade a New AXP Pin Girl



SOCIAL HIGHLIGHTS OF THE YEAR: The Cave Man Drag, our campus tradition; our Winter and Spring Formals, and our Pledge Costume Dance.



Sweetheart Dinner Before One of the Big Dances



Greek Week Brings The Chariot Race

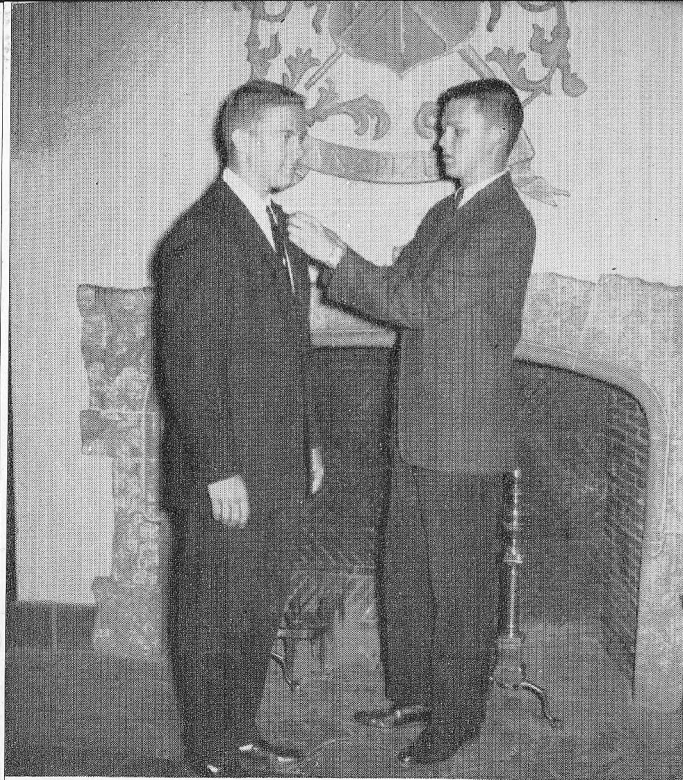
Social Activities At Alpha Chi Rho Are Varied



Our Men in Sachem Sing Tryouts



A Gift to the Fawcetts, our Regular Chaperones



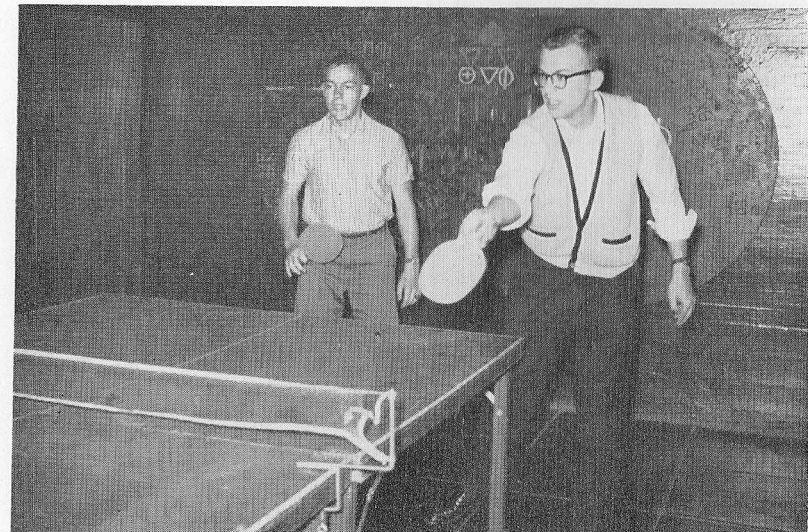
PLEDGING, one of the most important and serious steps in your college career.

You as an ALPHA

After reading and hearing many tall tales of the harrowing experiences of being a pledge, chances are that you sort of wonder if Fraternity life is for you. Let us reassure you that Fraternities have grown up, and Alpha Chi Rho is proud of its **CONSTRUCTIVE PLEDGE POLICY**. Alpha Chi Rho was the first National Fraternity to outlaw hazing. What does this mean to you? First, it means **NO HELL WEEK**. Our initiation is a solemn affair and not to be distracted from by petty "stunts." Secondly, it means that you will not go thru weekly line-ups and swat sessions. We want to pledge college men and teach them how to act as college men ought to act. The policy of Alpha Chi Rho is summed up in our public motto; **BE MEN**.



GEORGE LOSCHKY, Pledge Trainer, conducts a pledge meeting.



Ping-pong in the Crow's Nest

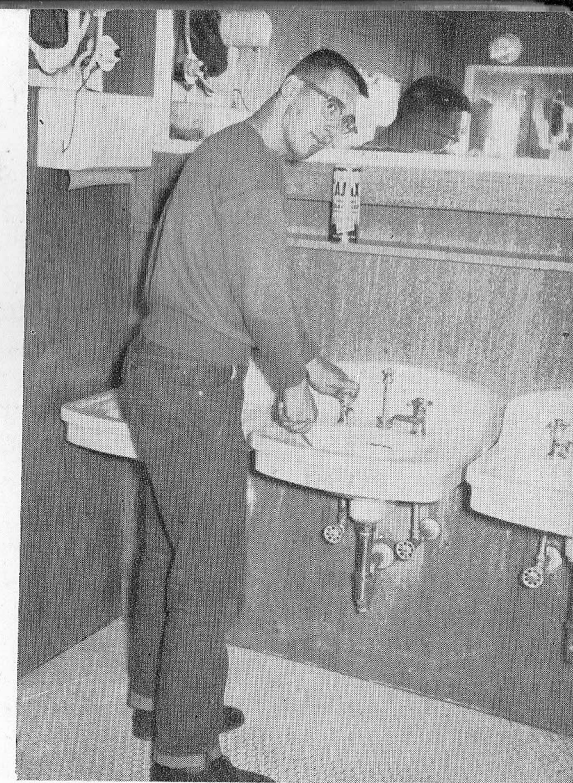
CHI RHO Pledge

Pledgeship is a period in which you are expected to learn from the Brothers about the Fraternity and about the things that go to make up the Socially and Culturally rounded man.

Pledgeship is a very enjoyable and beneficial part of your Fraternity and college career. You are a part of a pledge class which functions as a closely knit unit within the house and has many of its own functions in addition to the regular house activities such as pledge serenades, exchanges and parties.

In short, Alpha Chi Rho has a pledge program which holds much possibility for YOU. We feel we can give YOU the assistance YOU need to develop your best qualities.

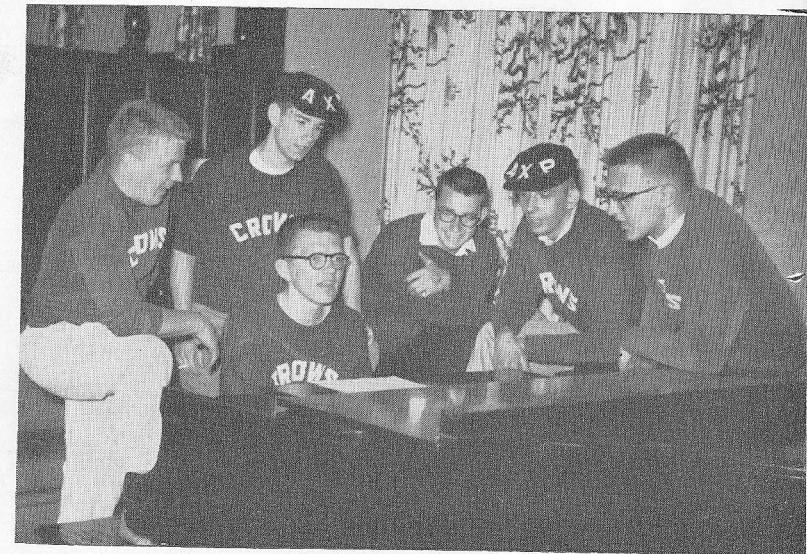
College life is not all studying and certainly not all leisure. The Crows have facilities for both and both get plenty of use. During study hours there is quiet in the house, but for those who aren't studying there is always ping pong and TV in the Basement "Crows Nest." AXP is OUR home.



If Mom Could Only See Me Now



What was that Bid?



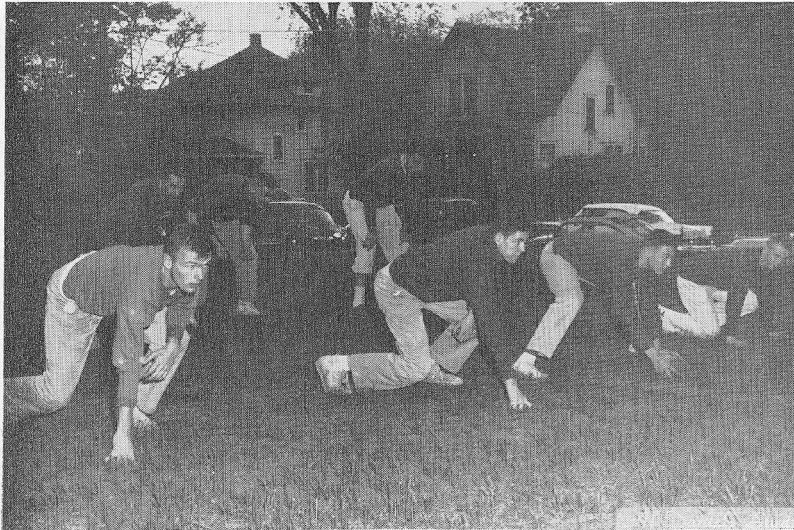
Now All Together

AXP in Athletics . . .

INTRAMURAL sports play an important role in a college man's life. In order to get the most out of your college career, you should have a strong, healthy body. Last year the Crows participated in most of the I-M sports offered.

Although the Crows gathered their share of wins in these activities, winning is not the main reason for our participation. Intramural sports help to build strong teamwork in the house and serve as a relief from the daily routine of study. Whatever your athletic talents may be, you will have a chance to display them for Alpha Chi Rho.

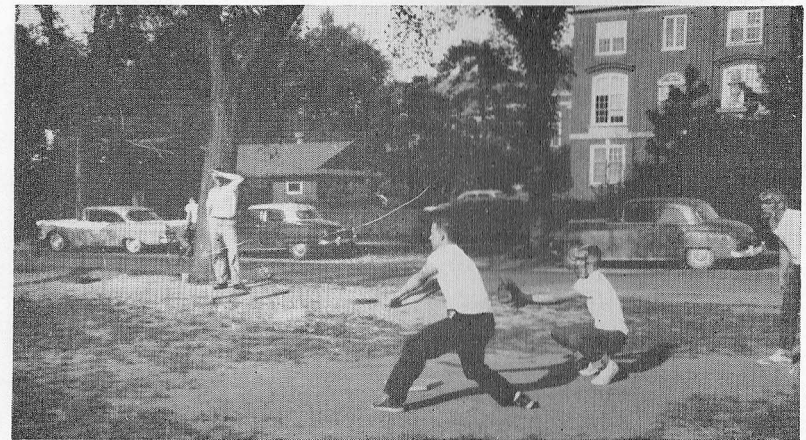
Being on Armory Street gives Alpha Chi Rho an opportunity to participate in the annual Armory Street Pajama Race and Grand Prix Bike Race. With sixteen fraternities participating, these meets provide plenty of keen competition for all athletically-minded Alpha Chi Rho men.



Our Intramural Football Team Lines Up



Our Co-Rec Softball Team



The Crows Hit it Out for a Win in I-M Softball

How Much Does It Cost? – Facts and Figures



LEON SCHROEDER, OUR CHAPTER TREASURER, keeps track of the finances and maintains our good financial status.

HOUSE BILL \$97.50

INITIATION FEE \$70.00

NO PLEDGE FEE

NO ASSESSMENTS

NO NOTES TO SIGN

ALPHA CHI RHO is known for its healthy financial condition. Our Chapter house, one of the finest, is completely free of mortgage and is owned by the Alumni Association. All major repairs and maintenance are paid for by the Alumni Association, thus relieving the undergraduate Chapter of much responsibility.

Our house bill is now among the lowest on campus. The complete house bill is \$97.50 per month and there are no notes or assessments. This includes all social activities and athletic entrance fees.

The initiation fee is \$70.00 and includes life membership in the Fraternity; life subscription to the Garnet and White, the Fraternity magazine and the oldest continually published Fraternity magazine in existence; plus our heavily jeweled Fraternity Badge, voted for years the most beautiful of all fraternity badges.

Alpha Chi Rho has no pledge fee. When a man is pledged to Alpha Chi Rho, he receives a copy of our new Exoteric Manual and the Labarum pledge pin.

Alpha Chi Rho is also noted for its fine food. Lucy, our cook, has been with us for over eight years and is one of the best cooks on campus.

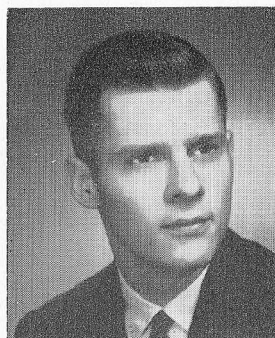
**ALPHA CHI RHO IS ONE OF THE MOST
FINANCIALLY SOUND HOUSES ON THE
U. OF I. CAMPUS**

AXP – CAMPUS ACTIVITY LEADER

ACTIVITIES are a vital part of every student's life on a college campus. The ability to meet and work with people, to organize projects, and to draw the very most from a committee can be invaluable when a man leaves the campus for business. They are an integral part of every college campus.

We at Alpha Chi Rho consider activities extremely important in receiving the most from our four years at Illinois. We encourage incoming freshmen to enter at least one campus activity.

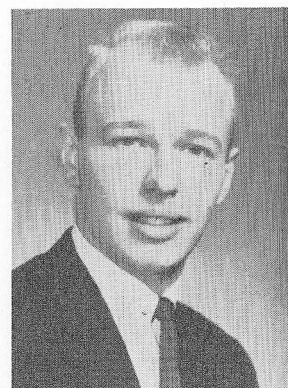
On these two pages you see some Alpha Chi Rho activity men and the activities and organizations they represent.



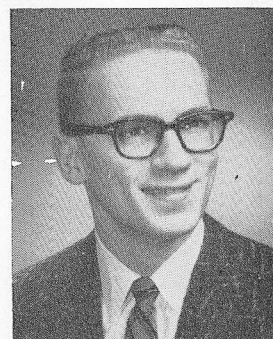
JOHN WEISENBERGER
Interfraternity Judicial
Committee
Executive Office Arnold
Air Society
Vice Commander Colonel
Air Force ROTC



TERRY ROMACK
Phi Eta Sigma
Interfraternity Council
University Chorus
Star and Scroll



WAYNE STEPHENS
Army Rifle Teams
President Star and Scroll
Phalanx



CHUCK MULLETT
Jazz-U-Like It
Business Manager
Interfraternity Council
Institute of Radio Engi-
neers
Illini Concert and March-
ing Bands



JOHN LEBECK
Block "I" Chairman
Mother's Day Chairman
Junior Interfraternity
Council
Student News and Infor-
mation Bureau



BILL YONTZ
President Illini Union
Ma-Wan-Da
President Marketing Club
Iota Delta Pi
YMCA Board

MORE ACTIVITY LEADERS FROM AXP



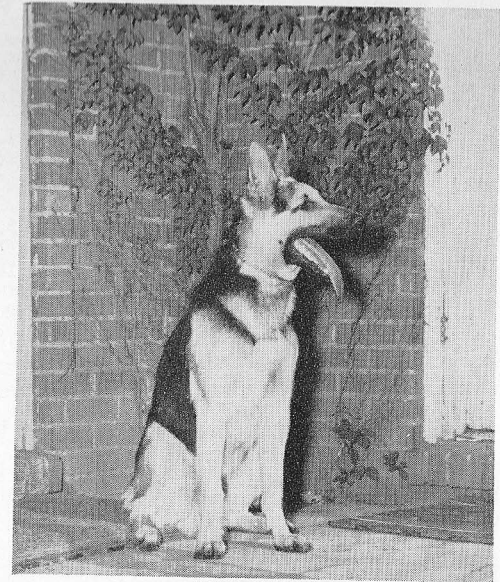
KEN BONNEM
Major Chairman
Jazz-U-Like It
Spring Musical
Sachem
Phi Mu Alpha
Campus Scout of Daily
Illini



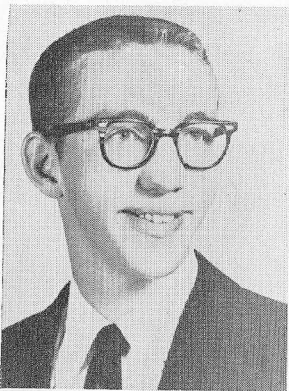
FRED WETTERING
Phi Eta Sigma
YMCA Cabinet
International Fair
Chairman Little U. N.
Phi Sigma Alpha



CONARD WHITE
Pershing Rifles
Drill Team
Freshmen Fencing Team



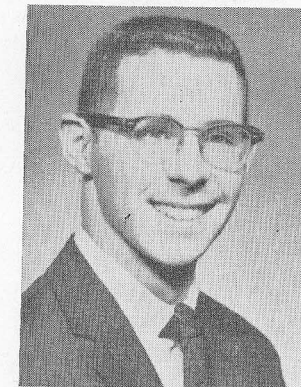
"Ace"
Certainly a **CAMPUS LEADER** because he
is so well known on campus.



AL REITZ
Illini Union Major
Chairman of Research
"Elite 8" Tournament
Chairman
Star and Scroll

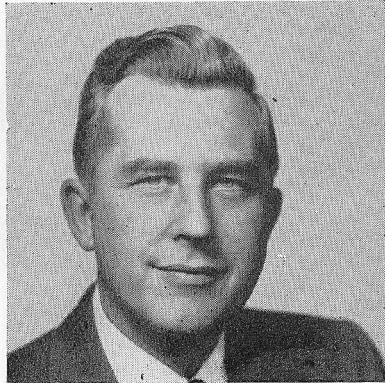


GEORGE RITSCHER
Illini Concert and March-
ing Bands
Alpha Phi Omega
Freshman Fencing Team



GEORGE SELLERS
American Institute of
Chemical Engineers
Illini Union Photographic
Chairman

Outstanding Members of Alpha Chi Rho . . .

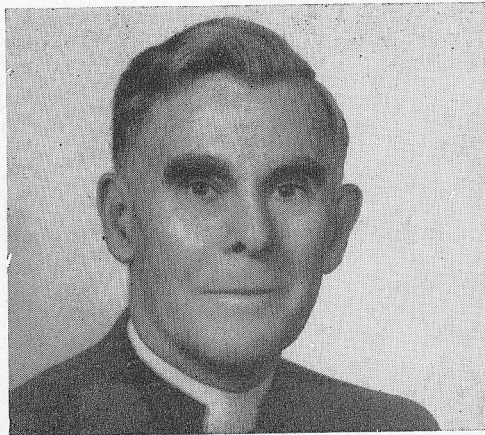


ROBERT B. MEYNER
New Jersey Governor

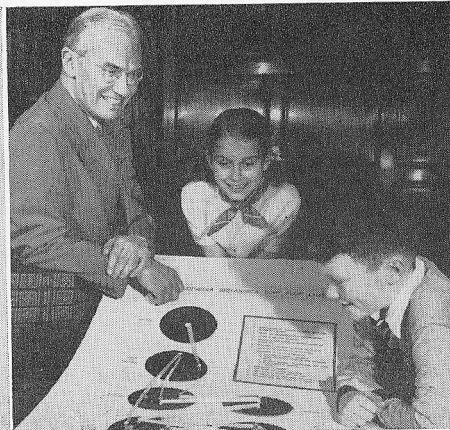
ALPHA CHI RHO is a nationally strong and respected Fraternity having many men listed in Who's Who and countless leaders in every field of endeavor. Among its members Alpha Chi Rho counts many corporation presidents, directors and executives, countless educators, many clergymen, as well as journalists and entertainers and athletes. It is a distinct advantage upon graduation to be able to contact Fraternity Brothers and get the inside track in employment.



HERSCHEL SCHOOLEY (right)
U. S. Defense Dept. Press Head



REV. FREDERICK BROWN HARRIS
Chaplain, U. S. Senate



WALTER YUST, EDITOR
Encyclopedia Britannica



DAVE BREUER
Talented Choreographer

THE following list is by no means a complete one. To make a complete list of all our famous "Crows" would indeed be a giant task. The following list is selected at random from Who's Who in America and similar references.

ROBERT B. MEYNER

Governor of New Jersey

JOHN C. STENNIS

Senator from Mississippi

CARLTON J. H. HAYES

Ambassador to Spain

HUGH D. SCOTT, JR.

Congressman from Pennsylvania

Chairman Republican National Committee

SAMUEL L. BODINE

Senator from New Jersey

WILLARD B. COWLES

Chief Legal Counsel to the U. S. Secretary of State

RICHARD E. S. DEICHLER

Vice President, American Airlines

WALTER W. PATCHELL

Vice President, Pennsylvania Railroad

HORACE R. BASSFORD

Vice President, Pennsylvania Railroad

JAMES M. SKINNER

President and Chairman of Board, Philco Corp.

DONALD McMASTER

Vice President, Eastman Kodak Co.

WALTER YUST

Editor, Encyclopedia Britannica

GERALD O. GRIFFIN

Director, National Safety Council

ALBERT E. JENNER, JR.

President, Illinois State and Chicago Bar Association

FRED WARING

Noted Band Leader

EDDY GILMORE

Noted Foreign Correspondent

Chief of the Associated Press in Moscow

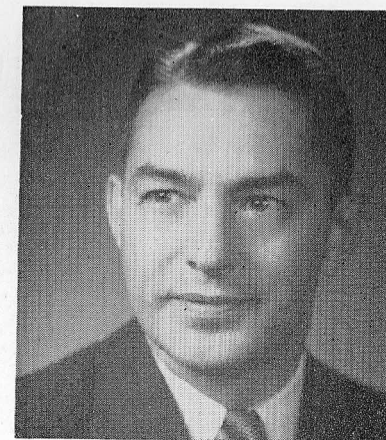
PLUS:

Over 25 Deans, Presidents and Directors of American Colleges and Universities.

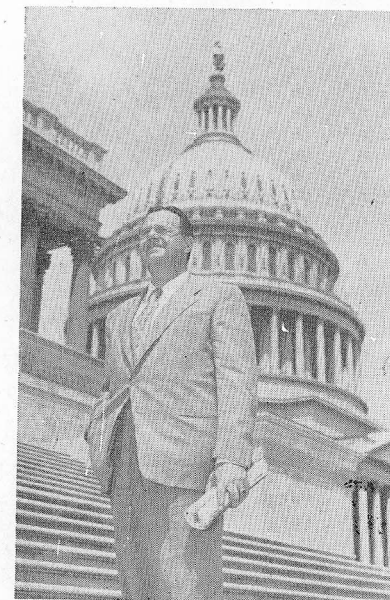
Over 50 Presidents and Vice Presidents of Major U. S. Corporations.

Countless Department Heads and Chairmen in Universities.

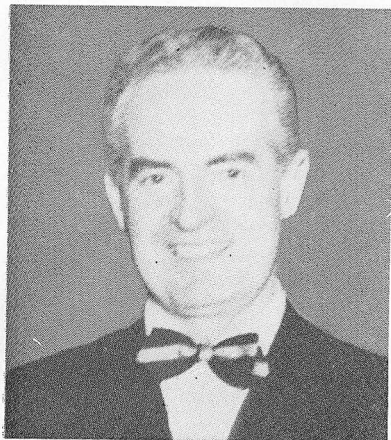
All go to make Alpha Chi Rho a Nationally Known and Influential Fraternity



DR. SANFORD S. ATWOOD
Provost of Cornell



REP. HUGH D. SCOTT, JR.
Republican Chairman



FRED WARING
Band Leader

FRANKLIN L. ORTH

Assistant Secretary of the Army

DR. LEWIS H. ROHRBAUGH

Provost of the University of Arkansas

DR. WILLIAM W. EDEL

President of Dickinson College

DR. D. S. ROBINSON

President of Butler University

WILLIAM H. BURKHART

President, Lever Bros.

Alpha Chi Rho Leaders

The leadership of Alpha Chi Rho rests with the men chosen yearly by the Chapter as a whole. To these men we owe much, for it is only thru efficient leadership that Alpha Chi Rho will remain on top among Illinois fraternities.

This year Terry Romack, a junior in Accounting from Newton, is at the reins as President of the Chapter. Terry is responsible for the organizational operation of the Chapter and is liaison between the Chapter and parents, alumni, and University.

Bob Behnke, a senior, is invested with the office of Vice President. Bob, who is working toward his degree in Physical Education, will be assistant trainer next fall of the varsity football team.

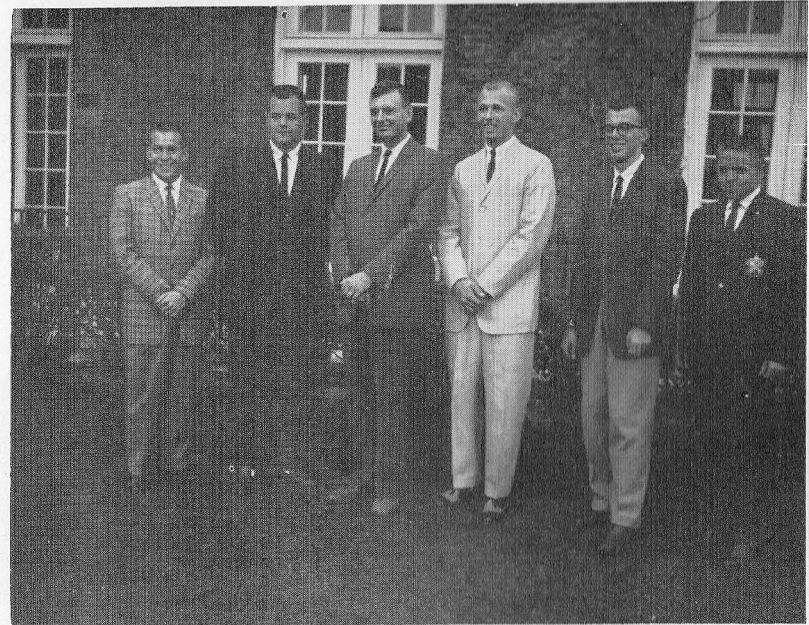
Rick Ruddell, a sophomore from Robinson majoring in Civil Engineering, is Secretary for the coming school year.

Leon Schroder, a senior in Political Science, is the man we elected to watch over the Chapter finances and to keep us in the top notch financial condition we are noted for.

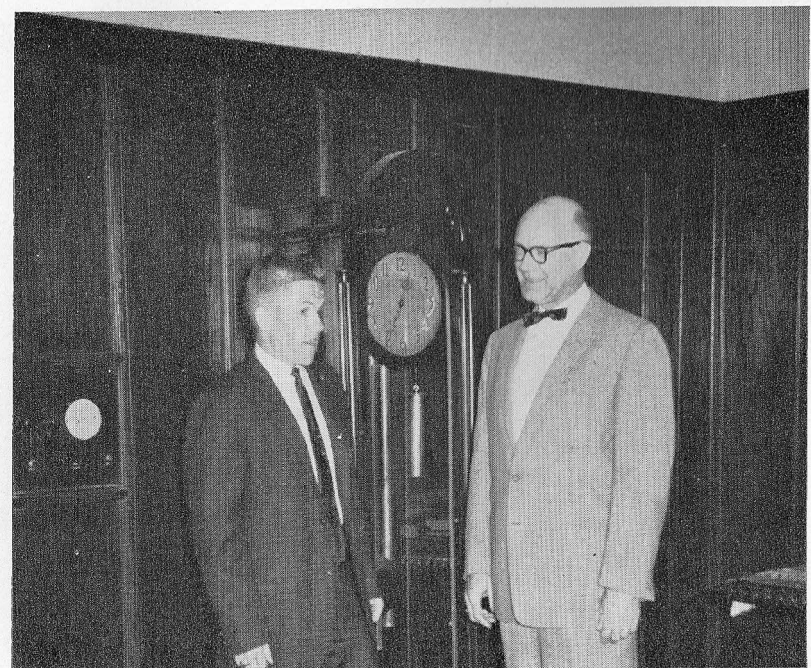
Probably the man most important to the social side of the house is our Social Chairman, Wayne Stephens, a senior in Physical Education from Blue Island. Wayne arranges for exchanges and sees to it that the Crows have the maximum number of social events allowed by the University.

The President of our Alumni Association and Local Advisor is Doc Bachman, a locally prominent manufacturer who keeps tab on the house and sees to it that the house is kept in good physical condition.

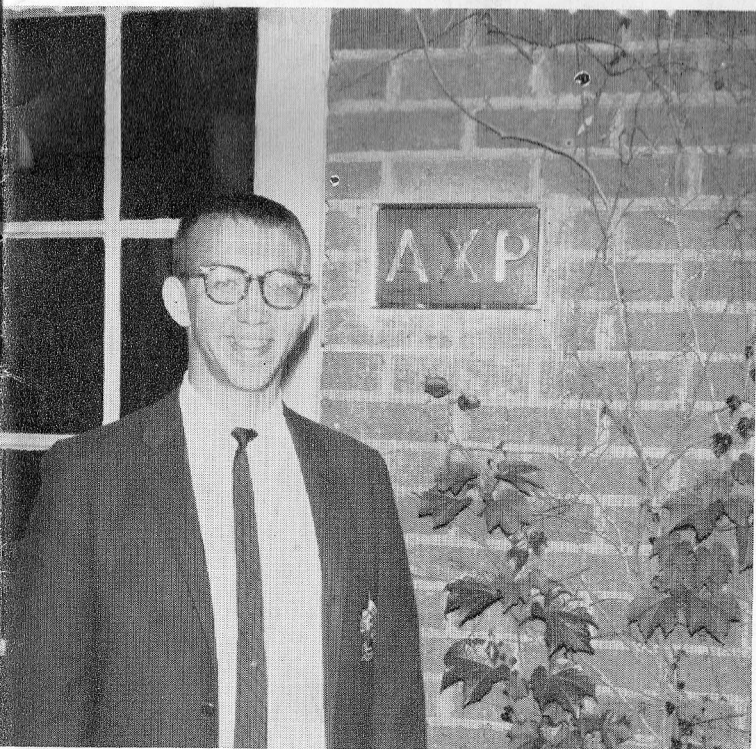
In addition to all the officers mentioned above we could mention the countless chairmen for various special occasions and the men who take care of many of the duties that arise throughout the school year.



Here Are the Men who Guide our Chapter



DOC BACHMAN, our local alumni adviser and Terry Romack, President, talk over Phi Kappa administrative matters.



AL REITZ
Rush Chairman

A Message To Your Parents . . .

Dear parents,

Your son is about to embark on an experience which will have an important effect on his success in the future. The guidance he receives from the men in the fraternity he chooses will be a big factor in his successful adjustment to college life.

We of Alpha Chi Rho have tried to present a complete and honest picture of our fraternity and the benefits we derive from it. Our period of pledging stresses scholarship and united constructive efforts *without bazing*.

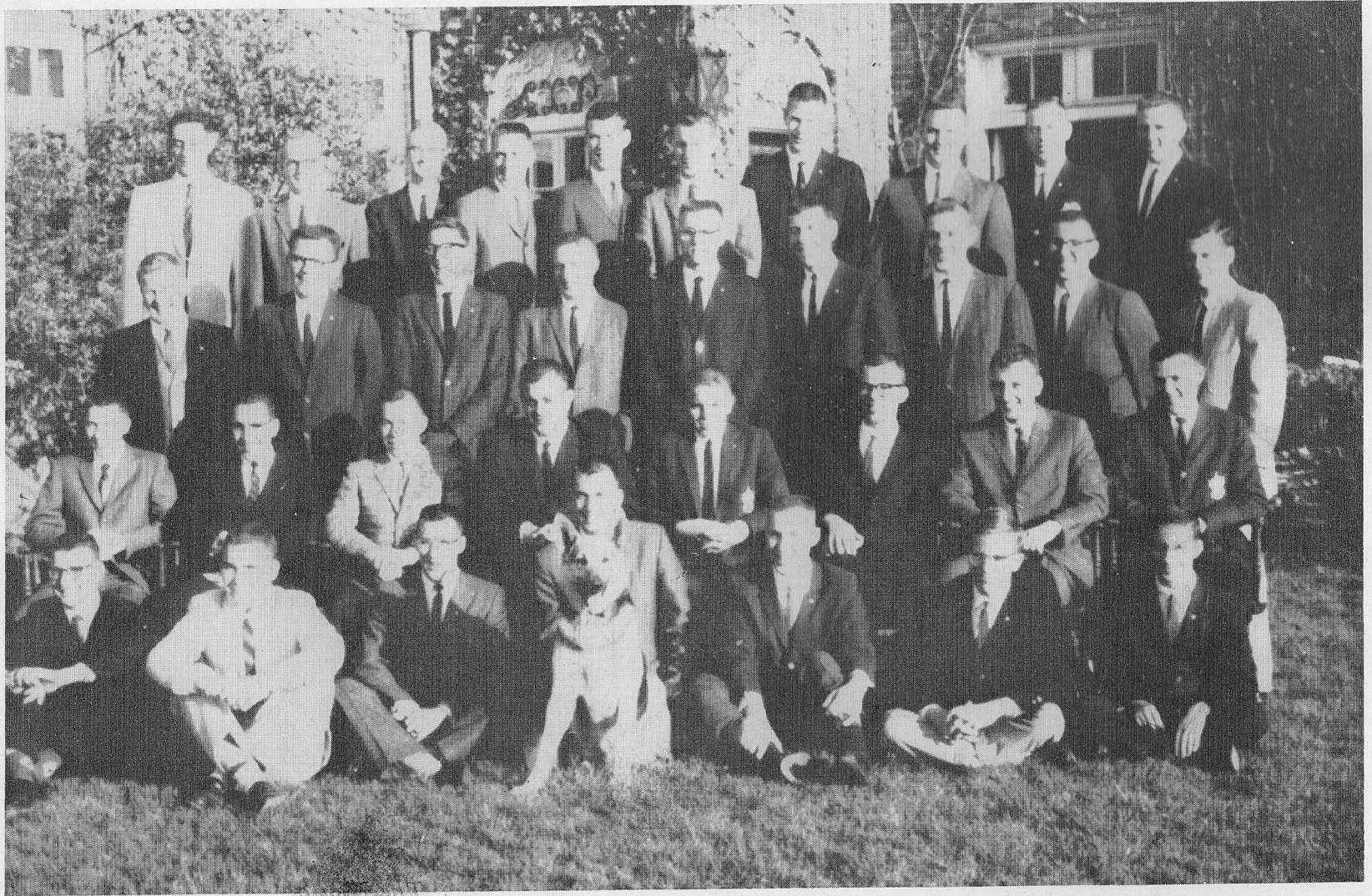
Alpha Chi Rho's initiation fee is \$70.00. This covers the cost of the badge, a lifetime subscription to our national fraternity publication, *The Garnet and White*, and life membership in Alpha Chi Rho.

The financial situation of Alpha Chi Rho is sound. The chapter house is completely paid for and no note must be signed upon pledging or at any time in the future. The complete cost of our fraternity life is borne by our monthly housebill of \$97.50. There are no special assessments for social or other activities added to the housebill.

We feel certain that your son would enjoy being part of Alpha Chi Rho as a pledge and, in the future, as a Brother. We sincerely hope that we will be able to meet him in September.

Yours very truly,
The Men of Alpha Chi Rho

The Men of Alpha Chi Rho



CHARLES MULLETT
BILL TERPSTRA
FRED WETTERING
JIM ANDERSON
RICK RUDDELL
CONNIE WHITE
JOHN LAING
DICK SCHULTZ
DON NANTKES
DENNY DUFFIELD
TERRY ROMACK
GARY WOLF
GREG LEIGH
WAYNE STEPHENS
JOHN LEBECK
LARRY JOHNSON
BOB BEHNKE
LARRY STROUP
AL REITZ
GEORGE SELLERS
GEORGE RITSCHER
KEN BREEDING
RICH MURRAY
BILL YONTZ
JOHN WEISENBERGER
PERRY WEST
GEORGE LOSCHKY
LEON SCHROEDER
CHET LASKOWSKI
TOM LITVEY
BILL WELCH
NEAL GILERAN

ENGINEERING
COMMERCE
L.A.S.
AGRICULTURE
ENGINEERING
ENGINEERING
COMMERCE
ENGINEERING
L.A.S.
VETERINARY MEDICINE
COMMERCE
ENGINEERING
AGRICULTURE
PHYSICAL EDUCATION
AGRICULTURE
ENGINEERING
PHYSICAL EDUCATION
ENGINEERING
COMMERCE
L.A.S.
F.A.A.
ENGINEERING
ENGINEERING
COMMERCE
COMMERCE
ENGINEERING
F.A.A.
L.A.S.
L.A.S.
COMMERCE
COMMERCE
ENGINEERING

SEATTLE, WASH.
LANSING
WHEELING
NEW LENOX
ROBINSON
LIMA
WOODSTOCK
OHIO
NAKOMSIS
PRINCETON
NEWTON
EARLVILLE
AVON
BLUE ISLAND
HARVEL
PARK RIDGE
WAUKEGAN
DIX
DES PLAINES
BERWYN
TAYLORVILLE
SHELBYVILLE
LANSING
SAN JOSE
OAK PARK
SHELBYVILLE
CHICAGO
COWLING
CICERO
HINSDALE
ROCK ISLAND
HINSDALE